



*“The Leaderhosen
Look.”*

Childrenswear SS19

A garden inspired collection for the playful and curious.



Children's wear SS19 concept and look book.

Garden inspired for the curious and playful.

Includes a color palette that captures the brighter side of the floral tones abundant in springtime.

They are balanced against a collection of earthy greens and blues that ground the palette.

Original prints, in 3 different color ways are showcased.

Soil

Forget-me-not

Common Sage

Blue Lupine

Not quite Dusty Rose

Sunshine Daisies, Butter Yellow..

Faded Amber

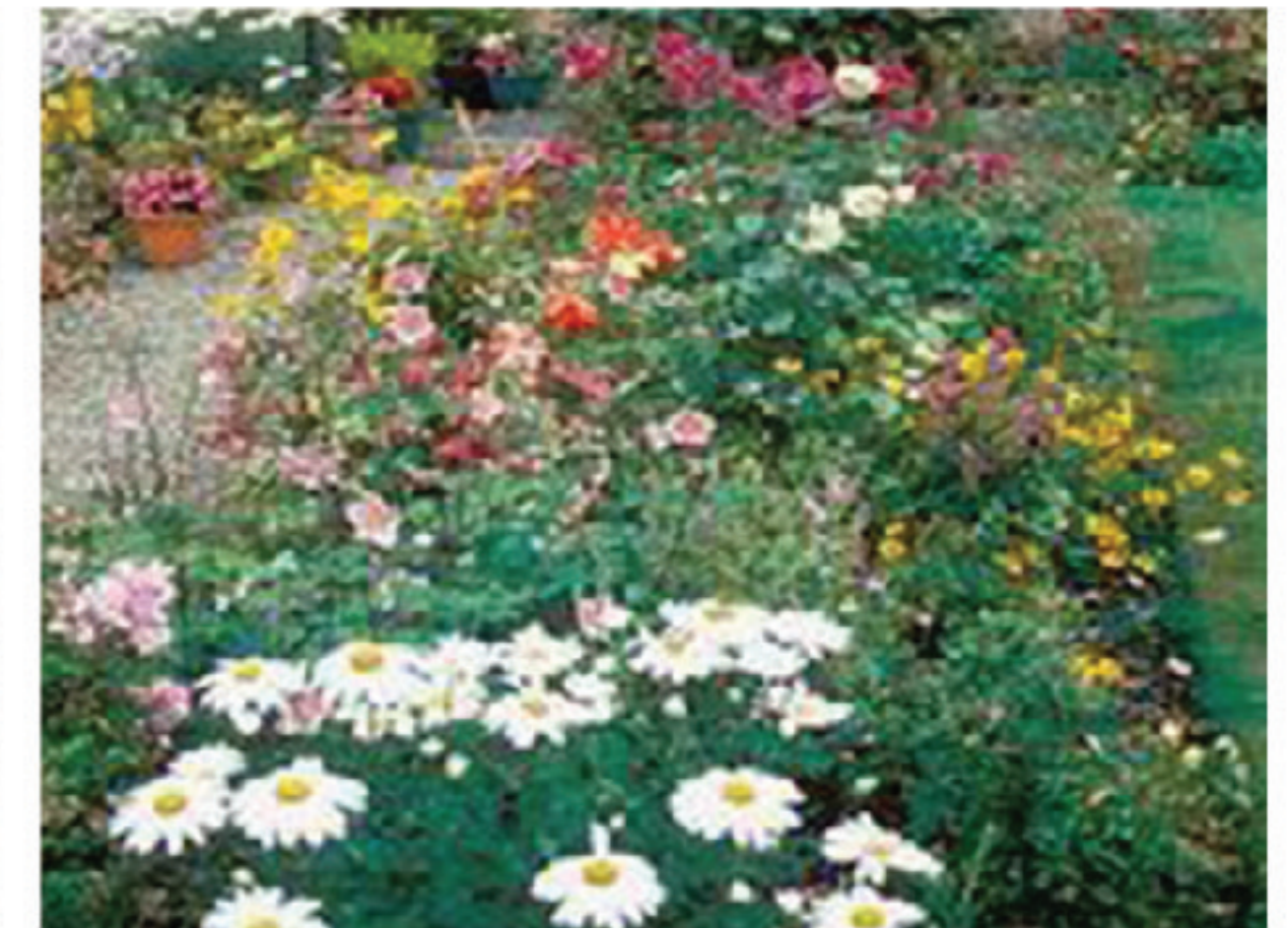
Snapdragon

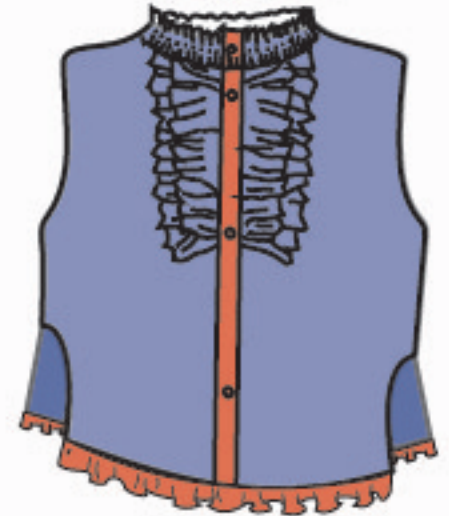
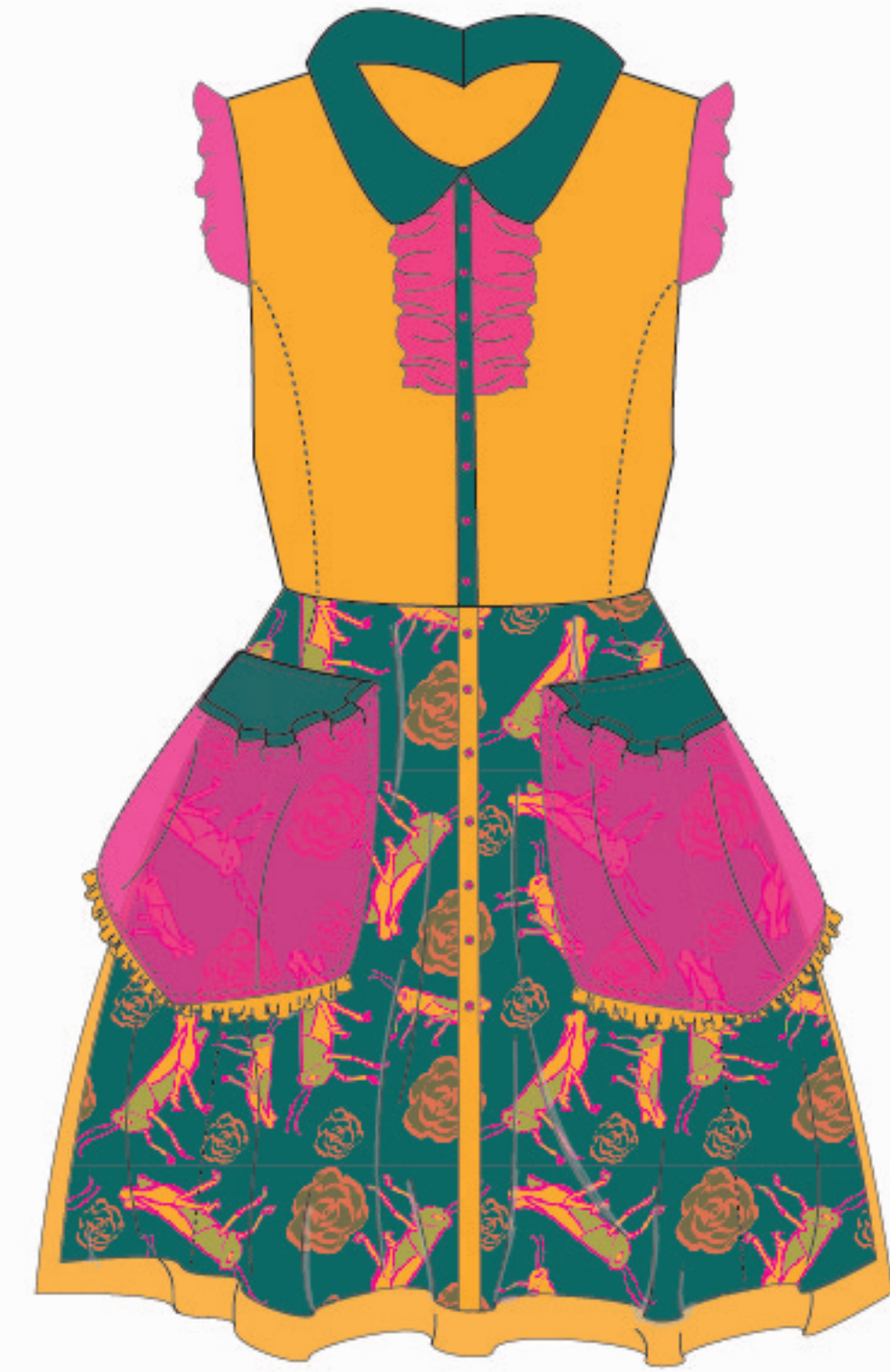
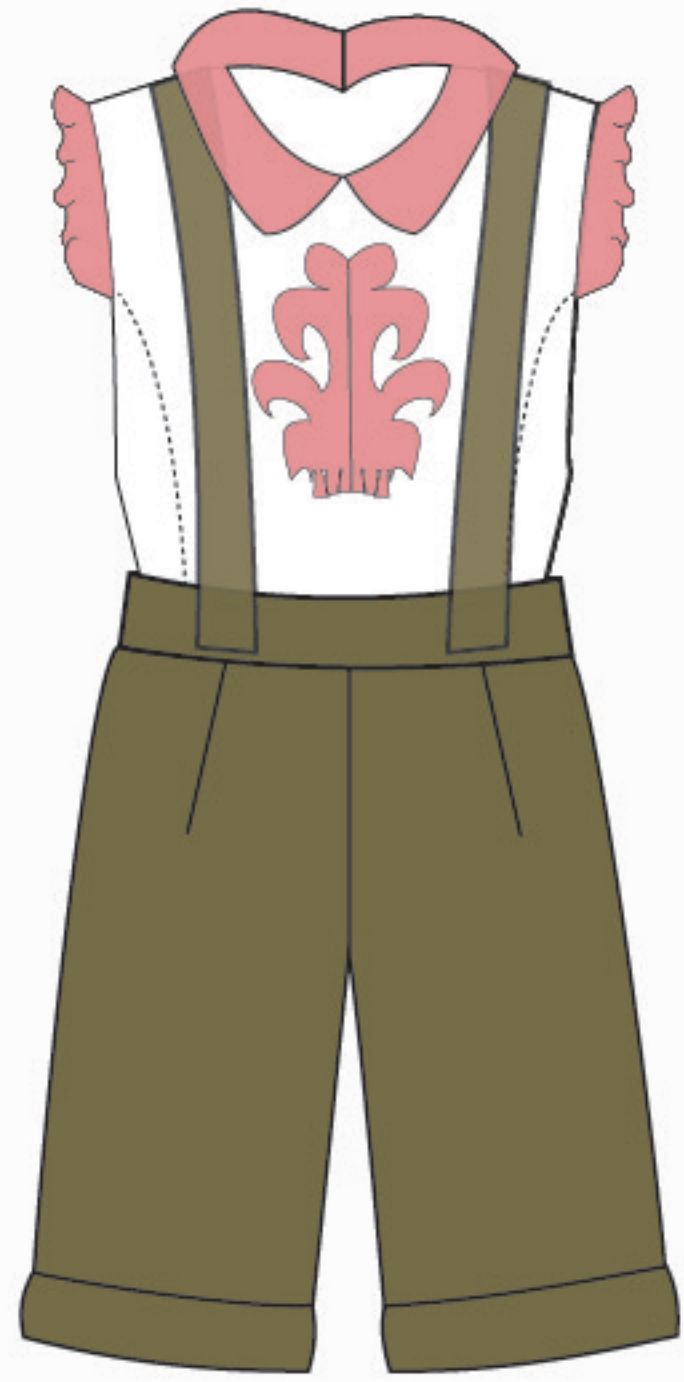
Petunia

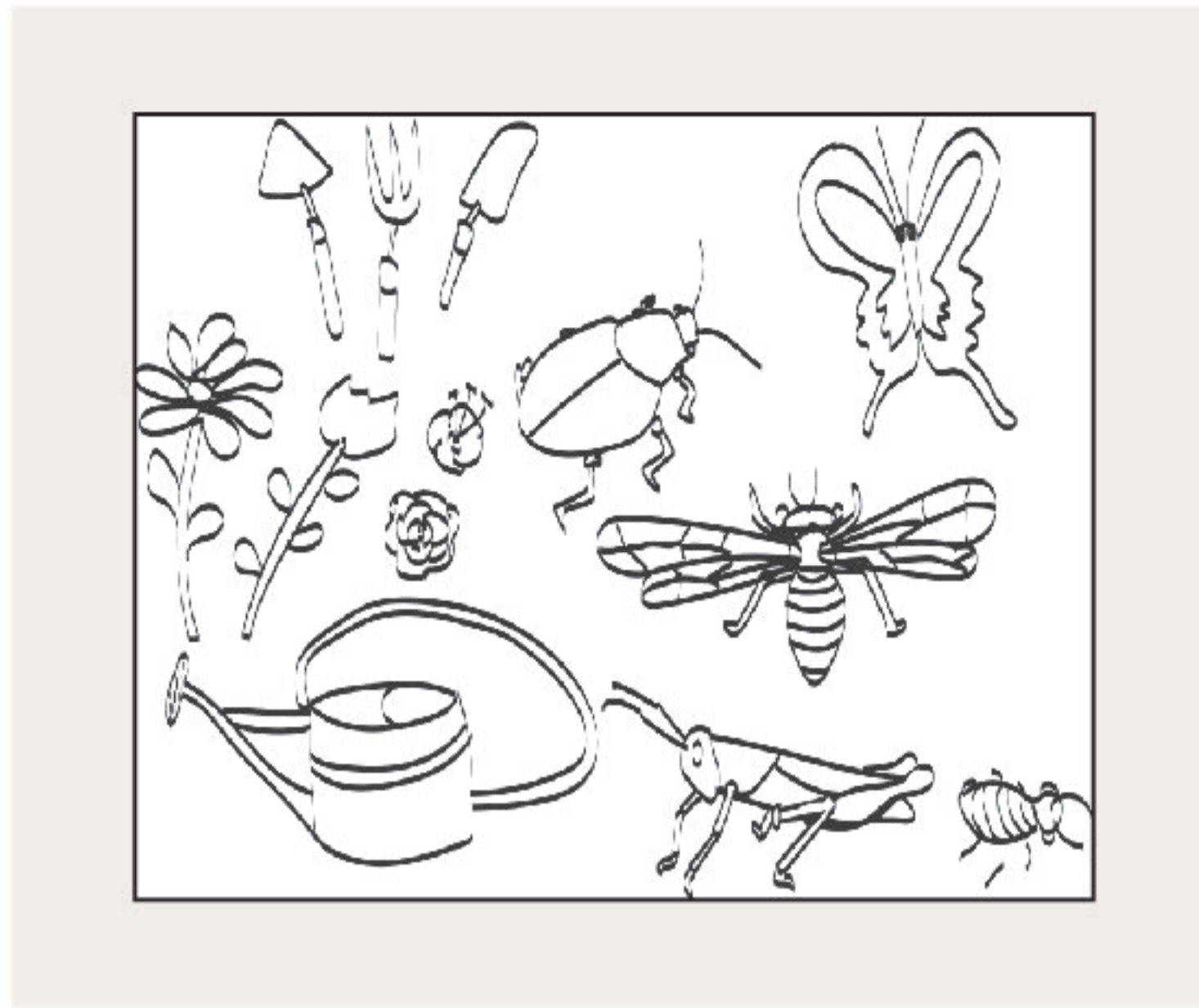
Dill

Rosemary

Thyme

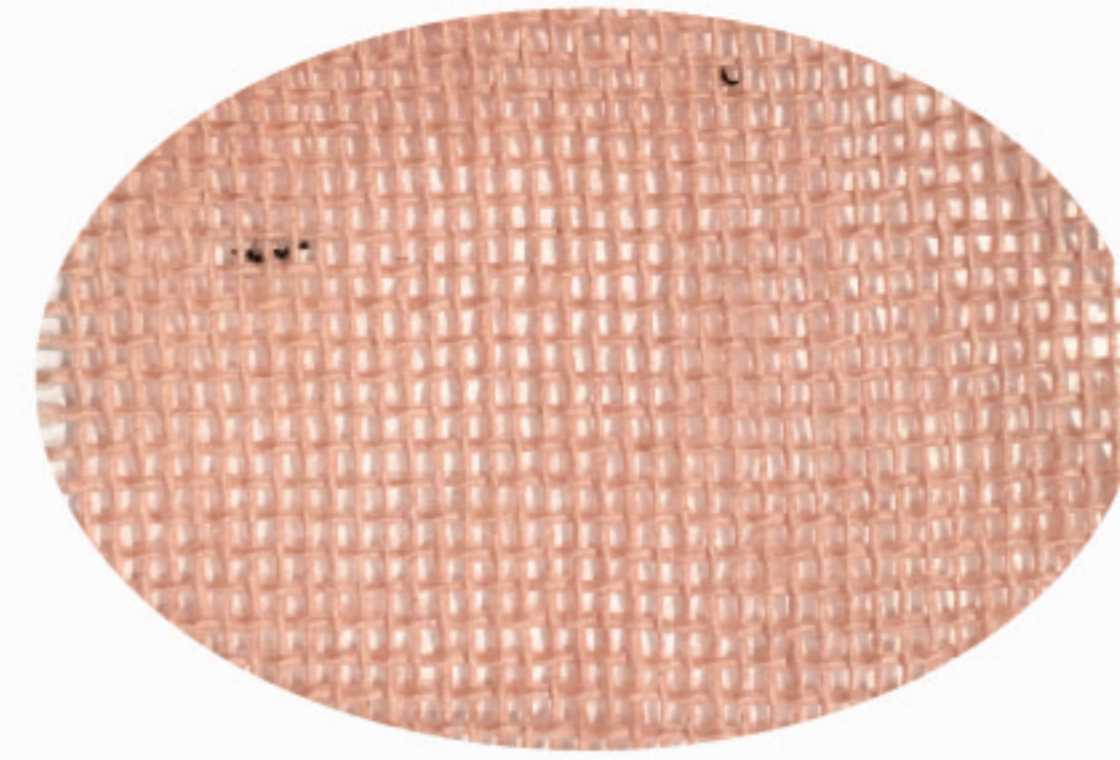
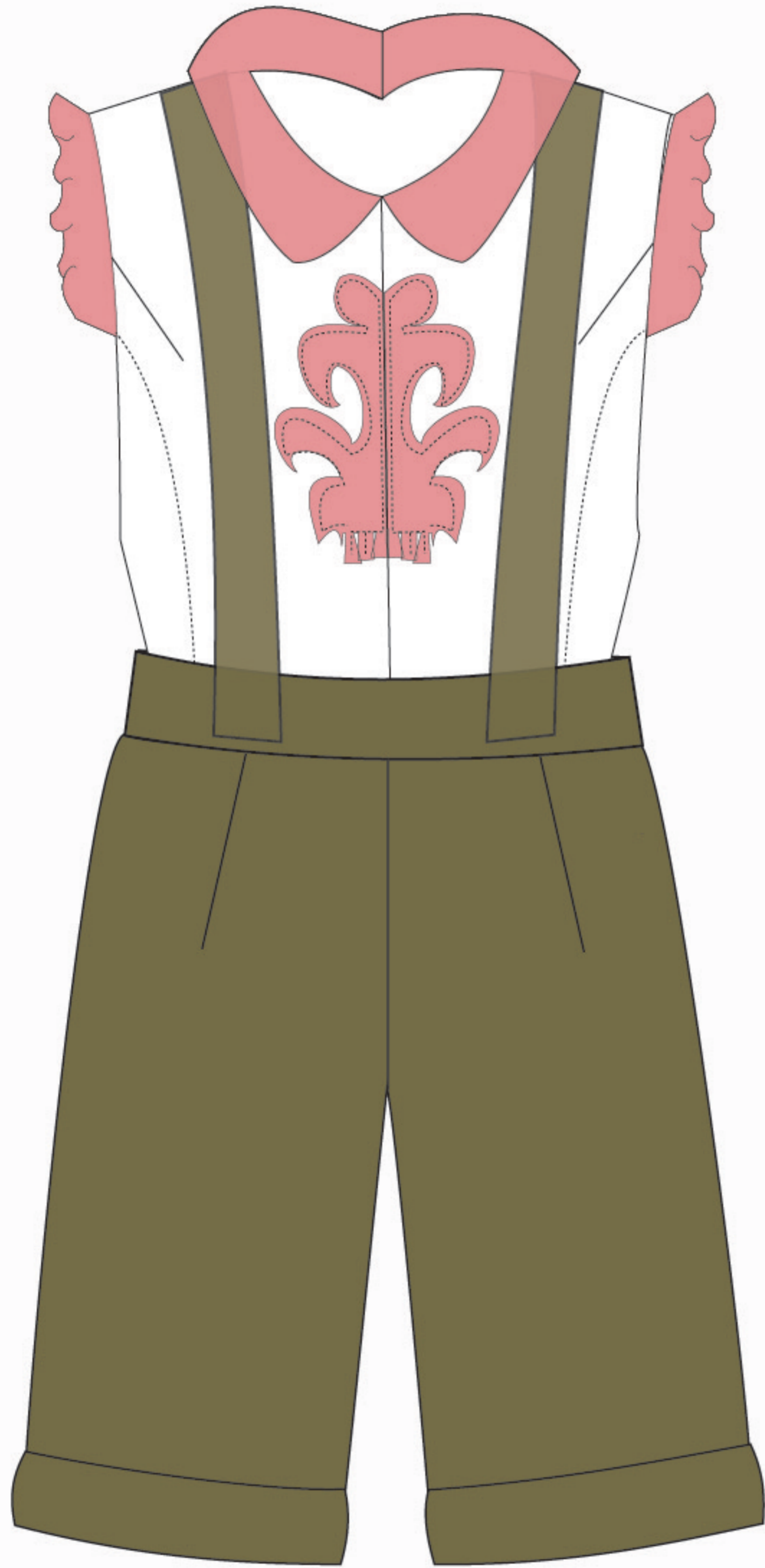






Hand drawn flowers, bugs, and garden tools are used as motifs for original prints.





Loose cotton woven



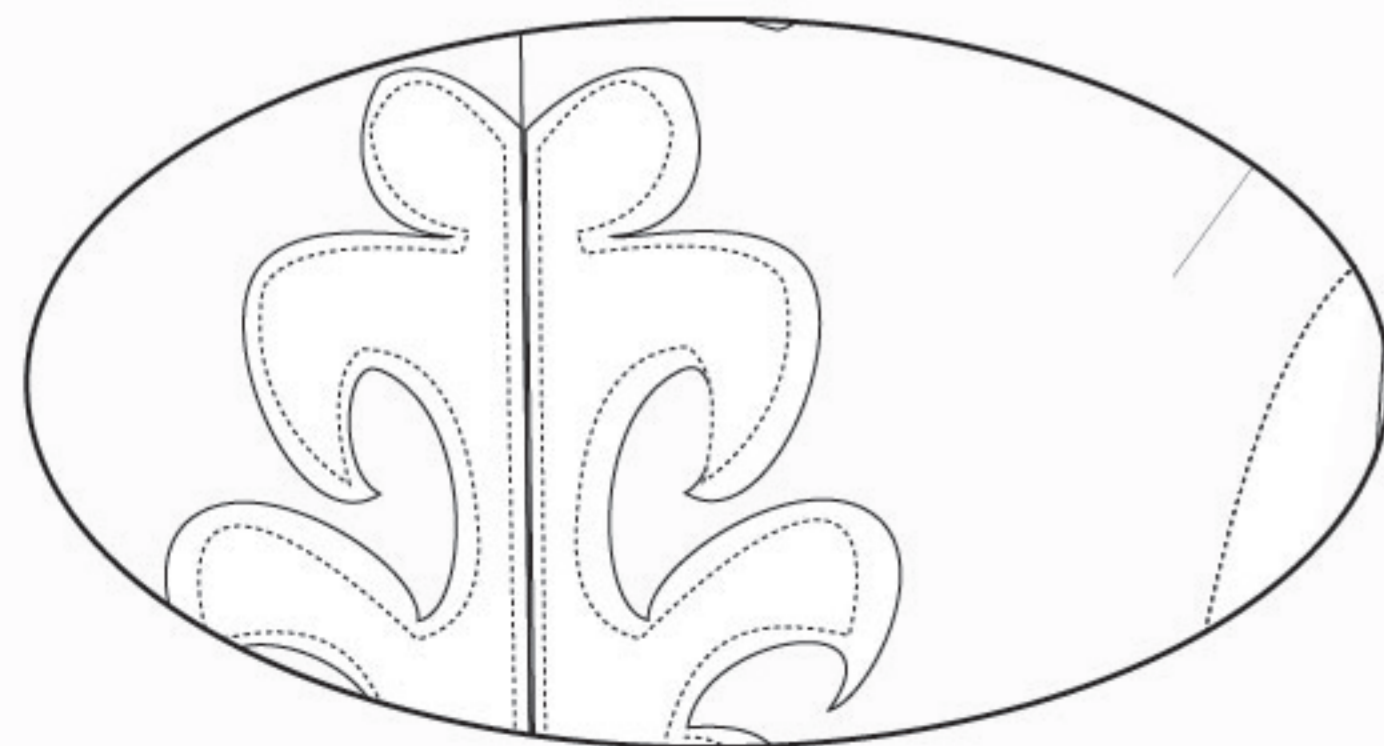
Cotton linen



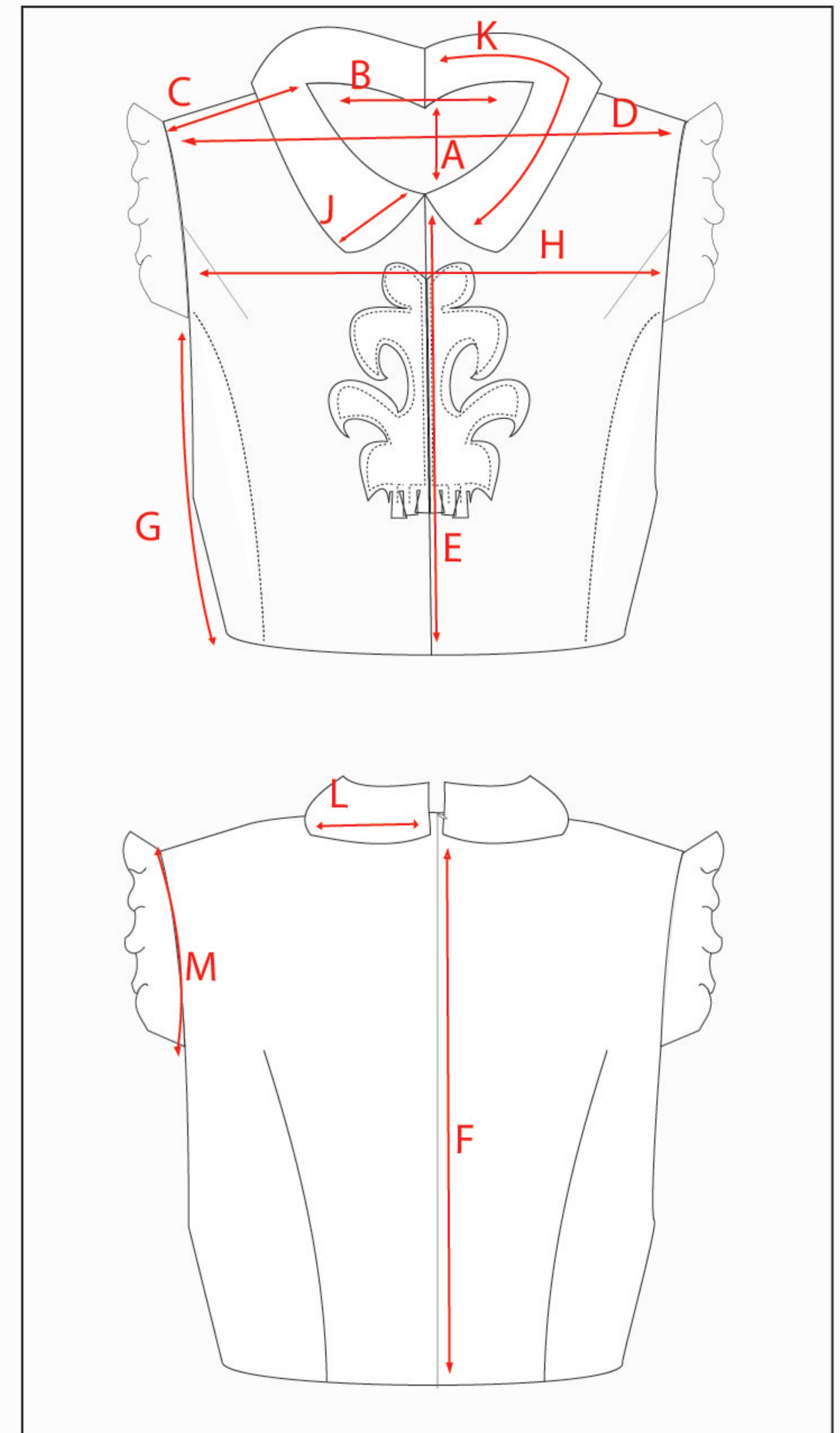
Cotton poly blend Courdroy

Season:	Spring/Summer 2017
Style:	Fitted blouse with side panel stylelines
Fabric:	Cotton linen
Description:	Fitted blouse with applique detail, peter pan collar, and ruffled sleeves

Measurement point		Large 10/12
A	Neck drop	2.75"
B	Neck width	6.25"
C	Shoulder Length	4.25"
D	Across Shoulder	12.5"
E	CF Length	13.25"
F	CB Length	14.5"
G	Side Length	8.0"
H	Across Chest	11.75"
I	Across Waist	13.25"
J	Collar Height	2.25"
K	Collar Length	8.5"
L	Collar Width at CB	4.5"
M	Armhole Circumference	13.25"

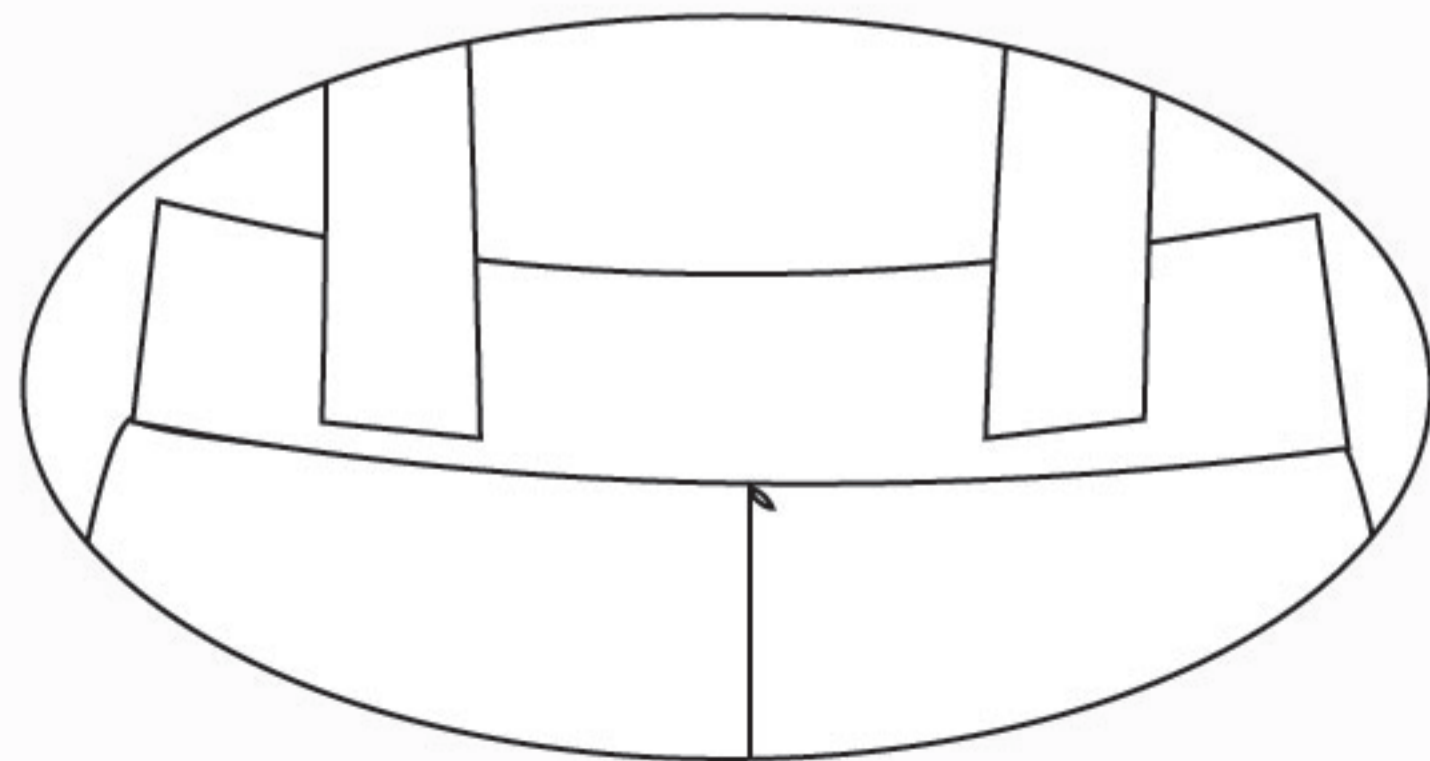
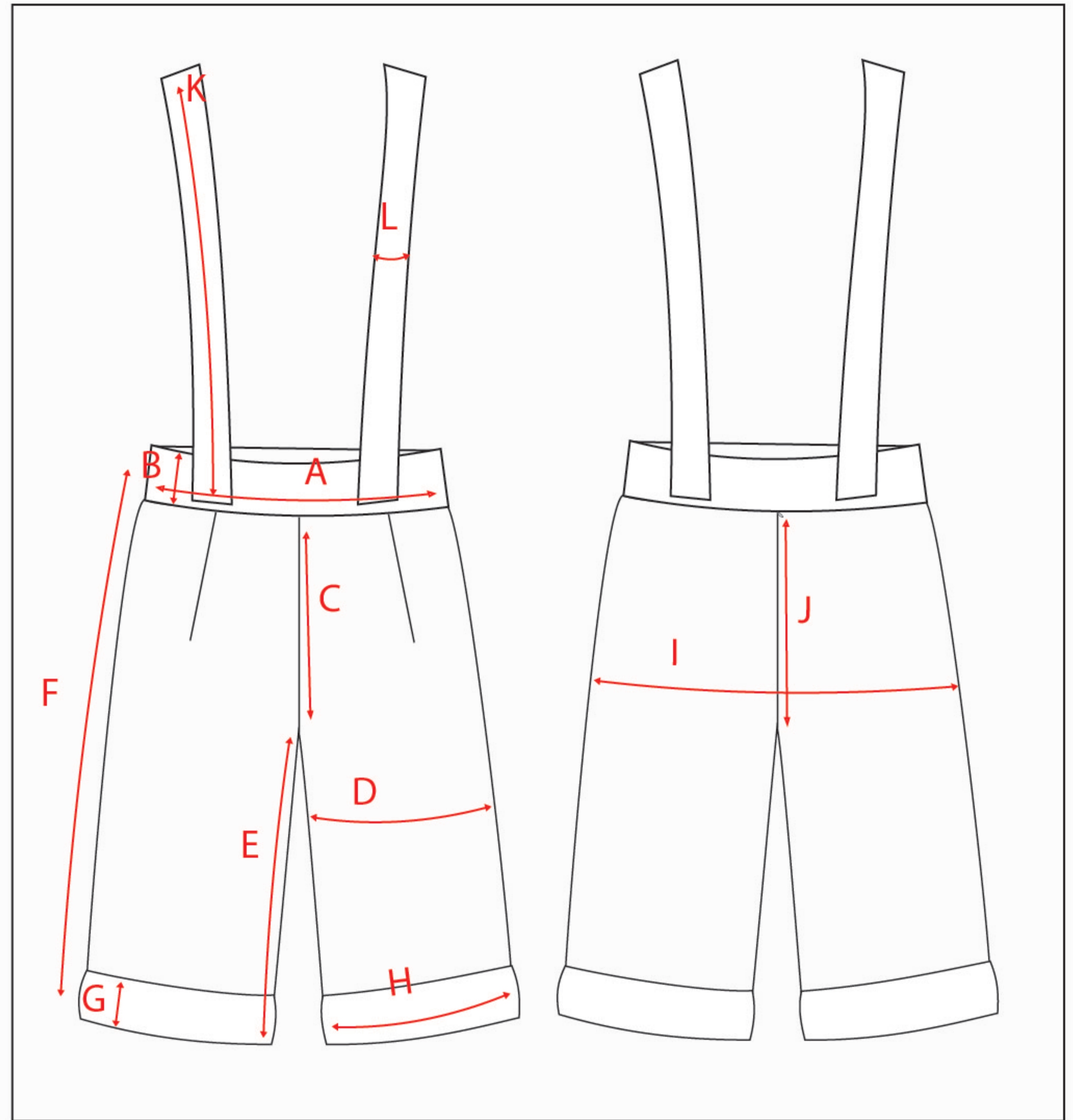


Front detail: Top stitching along edge of applique piece.



Season:	Spring/Summer 2017
Style:	Lederhosen pant
Fabric:	Cotton poly blend Courdoroy
Description:	Lederhosen style pant with a high waist

Measurement point		Large 10/12
A	Waist band Circumference	25.5"
B	Waist band Height	1.4"
C	Center front seam length	11.4"
D	Pant leg Circumference	20.5"
E	Inseam Length	7.0"
F	Outer Seam Length	18.0"
G	Knee Cuff Height	1.4"
H	Knee Cuff Circumference	16.4"
I	Circumference at Hip	32.5"
J	Center back seam Height	12.6"
K	Strap length	32"
L	Strap Width	1.75"



Back detail: invisible zipper
along center back seam for
closure

